

Installation instructions

安装说明书



Neon light strip / 霓虹灯带

Suitable for use with similar products / 适于用同类产品

Installation Guide / 安全指引

The appliance should be installed, connected and tested by qualified electrician, and in accordance with local regulations. 电器应由合格的电工安装、连接和测试，并符合当地法规。

Turn off the power supply before installation or maintenance of the appliance, and make sure that the cables will not be squeezed or damaged by sharp edges.

在安装或维护设备之前，请关闭电源，并确保电缆不会被锋利的边缘挤压或损坏。

Ensure that LED lighting fixtures do not come into contact with corrosive chemicals, solvents, or abrasive cleaners.

确保 LED 灯具不会接触到腐蚀性化学物质、溶剂或研磨清洁剂等。

To avoid injury or damage to the lighting fixtures, please ensure that the power cord and lighting fixtures are securely installed before connecting the power supply.

为避免受伤或损坏灯具，请在连接电源前确保电源线和灯具安装牢固。

Disclaimers / 免责声明

1. Pay attention to the positive and negative poles of the power cord, do not connect them incorrectly, and check whether the voltage of the power supply is consistent with that of the product to avoid product damage.

注意电源线的正负极，切勿接错，核对电源与产品的电压是否一致，以免造成产品损坏。

2. In practical applications, the power supply should have a 20% margin (it is recommended to only use 80% of the power) to ensure sufficient voltage to drive the product.

实际的应用中，电源应保留 20% 的余量（建议只使用 80% 的功率），以保证足量的电压驱动产品。

3. To ensure the lifespan and reliability of neon light strips, they need to be bent in the specified direction (top light and side light are different) and bent according to the prescribed curvature according to the instructions.

保证霓虹灯带的寿命和可靠性，需要在指定方向（顶发光和侧发光不一样），并依据说明按规定内的弧度进行弯曲。

4. The LED module itself and all its components cannot withstand mechanical pressure.

LED 模块本身及其所有元器件不能承受机械压力。

WARNING / 警告

LED lighting fixtures are low voltage distribution. Before connecting the 220V power supply, please ensure that the device is correctly connected to the driver. Otherwise, it will damage the equipment. After activation, hot swapping is not allowed in the drive.

LED 灯具为低压配电。在连接 220V 电源之前，请确保设备已正确连接到驱动器。否则，会损坏设备。开启后，驱动器中不允许热插拔。

Before any maintenance, adjustment, or cleaning of the lighting fixtures, always ensure that the power is turned off and the LED fixtures have cooled down. Electrical appliances can be cleaned with a soft cloth and standard pH neutral detergent.

在对灯具进行任何维护、调整或清洁之前，始终确保电源已关闭，LED 灯具已冷却。可用软布和标准 PH 中性洗涤剂清洁电器。

Electrical appliances should not be covered with insulation blankets or similar materials. Otherwise, it is easy to cause fire accidents.

电器不应被隔热毯或类似材料覆盖。否则易造成火灾故障。

5. It is recommended to use parallel connection as a safe electrical operation mode. Serial connection is not recommended. Unbalanced pressure drop can cause dangerous overload and damage to LED modules.

建议采用并联方式作为安全的电气运行方式。不建议进行串行连接。不平衡的压降会造成危险的过载，损坏 LED 模块。

6. When installed on metal or other conductive surfaces, it is necessary to provide electrical insulation protection at the solder joints between the module and the installation surface.

当安装在金属或其他导电表面时，需要在模块和安装表面之间的焊点处做好电气绝缘防护。

7. Pay attention to ESD steps when installing modules.

安装模块时注意 ESD 步骤。

8. Neon light strips should be stored in a dry and sealed environment, with a recommended storage period of no more than one year. The working temperature is $-20^{\circ}\text{C} \sim +45^{\circ}\text{C}$, and the storage temperature is $0^{\circ}\text{C} \sim +60^{\circ}\text{C}$;

霓虹灯带应存放在干燥密封的环境，建议存放期不超过一年，工作温度： $-20^{\circ}\text{C} \sim +45^{\circ}\text{C}$ ，贮存温度 $0^{\circ}\text{C} \sim +60^{\circ}\text{C}$ ；

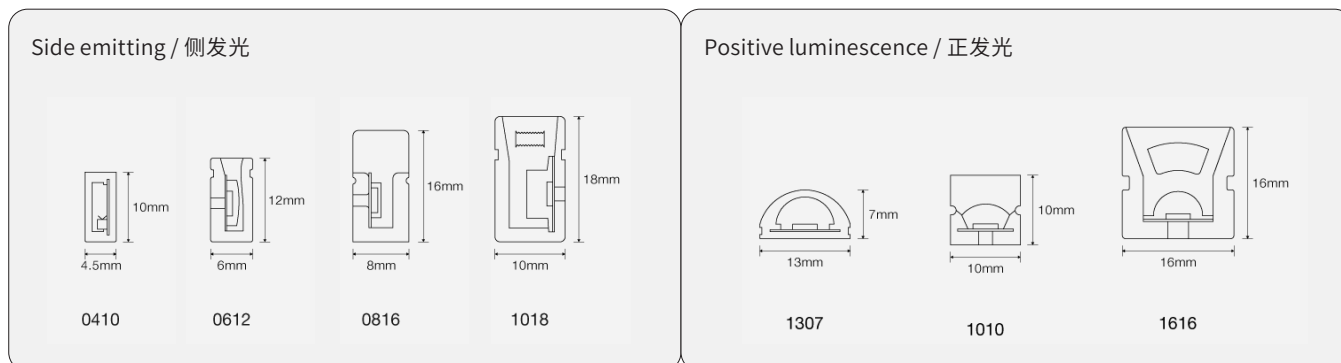
Installation instructions

安装说明书



Neon light strip / 霓虹灯带

Suitable for use with similar products / 适于用同类产品



Connector installation / 连接器安装

1

Preparation before installation: Cutting neon light strips / 安装前准备：剪裁霓虹灯带

(1) Align the cutting line and ensure that the cutting edge is flat; / 需裁剪线对齐，并保证切口平整；

(2) It is necessary to cut the adhesive silk screen line on the back of the PCB board completely to avoid insulation of the silk screen line that may cause it to fail to conduct. / 需将 PCB 板背胶丝印线裁剪完整，避免存留丝印线绝缘导致无法导通。

对齐丝印线剪裁
Align silk screen line cutting

2

Insert the transparent PC external card onto the light strip, aligning the silk screen surface of the PC external card with the bottom of the light strip, with the silk screen arrow pointing towards the connector;

将透明 PC 外卡套上灯带，需将 PC 外卡丝印面与灯带底部对齐，丝印箭头指向连接器；

light-emitting surface 霓虹灯发光面
霓虹灯底部 bottom surface
PC外卡丝印面
PC external card screen printing surface

3

Installation of internal card / 内卡安装

Before installing the inner card, gently bend the inner card into the light strip, with the end face of the light strip approximately 1-2mm away from the edge of the inner card.

安装内卡前，轻掰内卡入灯带，灯条端面约和内卡边沿相隔 1-2mm.

图1

4

Push the connector into the light strip: check whether the waterproof silicone is flat and aligned, and cut the corner to face the negative terminal; Perform a lighting test after installation.

将连接器推入灯带：检验防水硅胶是否平整和对齐，切角与端子负极相对；装好后进行点亮测试。

Installation instructions

安装说明书

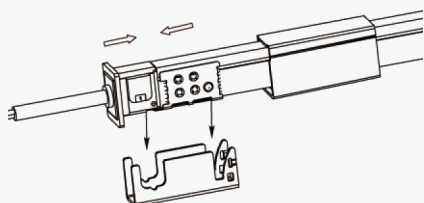


Suitable for use with similar products / 适于用同类产品

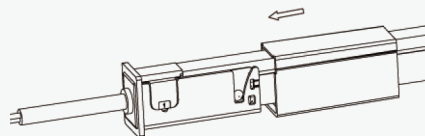
Neon light strip / 霓虹灯带

5 Installation of the middle card: Align the left end connector and the right end of the inner card with the middle card, and insert them into the middle card.

中卡安装: 将左端连接器及内卡右端对齐中卡, 推入中卡。



6 Install the external card as shown in the diagram.
外卡安装, 如图所示。



precautions / 注意事项

No trampling allowed / 禁止踩踏



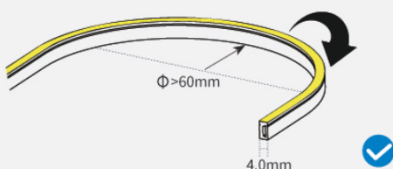
Prohibition of distortion / 禁止扭曲



No stretching allowed / 禁止拉伸

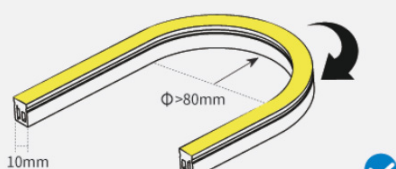


Side curved luminous surface < 10mm
侧弯发光面 < 10mm



Correct bending method / 正确弯曲方式

Side curved luminous surface $\geq 10\text{mm}$
侧弯发光面 $\geq 10\text{mm}$



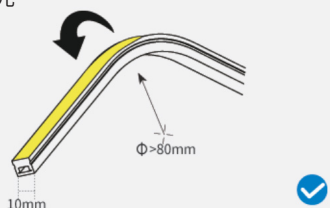
Correct bending method / 正确弯曲方式

Side bending luminescence
侧弯发光



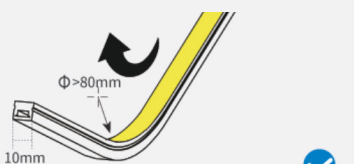
Wrong bending method / 错误弯曲方式

Positive curved luminescence
正弯发光



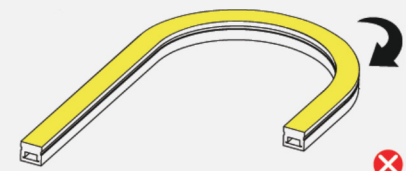
Correct bending method / 正确弯曲方式

Positive curved luminescence
正弯发光



Correct bending method / 正确弯曲方式

Positive curved luminescence
正弯发光



Wrong bending method / 错误弯曲方式

Installation instructions

安装说明书



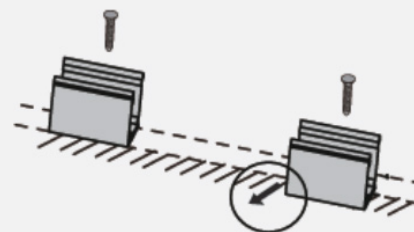
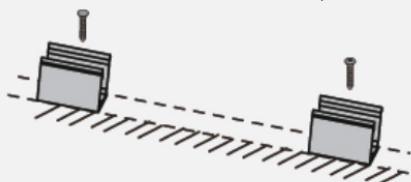
Neon light strip / 霓虹灯带

Suitable for use with similar products / 适于用同类产品

Installation method of clip / 卡子的安装方式

Fix the clip or carrier in the installation position with screws, and it is recommended to use 2 clips per 1 meter;

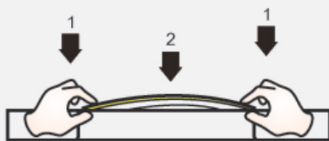
将卡子或载体用螺丝固定在安装的位置, 1m 建议使用 2 个;



Installation method of carrier / 载体的安装方式

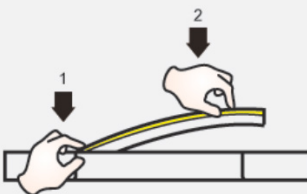
Install the light strip simultaneously from both ends

安装灯带时从两端同时进行安装操作



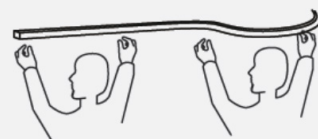
Installation from one direction is prohibited

禁止从一个方向开始安装



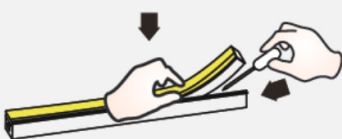
It is recommended to have two people install the light strip if it exceeds 2 meters

灯带超过 2m 建议 2 个人安装



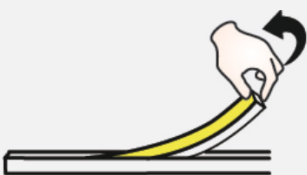
Be careful with tools when disassembling

拆卸时应用工具小心处理



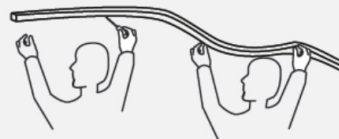
Do not directly pull out the light strip during disassembly

拆卸时禁止直接将灯带拉出



It is recommended to have 2 people disassemble the light strip if it exceeds 2 meters

灯带超过 2m 建议 2 个人拆卸



Installation instructions

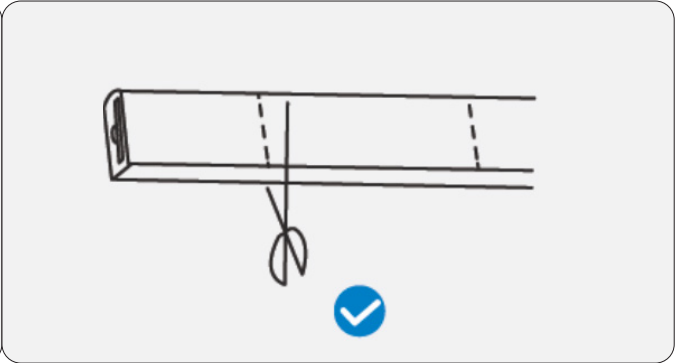
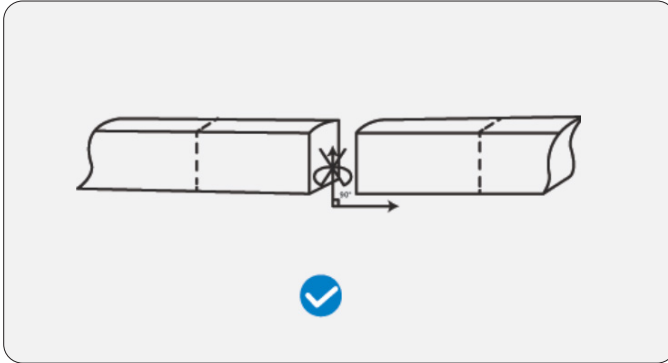
安装说明书



Neon light strip / 霓虹灯带

Suitable for use with similar products / 适于用同类产品

Glue cutting welding and plug installation / 切胶焊接与堵头安装



1

Cut the light strip to the required size (the minimum cutting unit is based on the label of the light strip)

将灯带裁剪到需要尺寸 (最小裁剪单位以灯带的标注为准)

2

Expose the copper foil on one end of the light strip (cut open the adhesive on the side of the light strip)

将灯带的一端铜箔 (灯带侧面胶体切开) 露出

3

Connect the wire to the light strip (pay attention to the positive and negative poles)

将线材与灯带连接 (注意正负极)

4

Insert the perforated plug into the wire and inject adhesive into the plug. The amount of adhesive A is 1/3 to 1/2 of the plug

将有孔堵头穿进线材, 胶水注入堵头内 A 胶水量为堵头的 1/3 至 1/2

5

Push the plug into the light strip (after gluing, the light strip needs to be laid flat for 2 hours until the plug surface is dry before proceeding with the tail blocking work)

将堵头推进灯带 (注胶后灯带需平放 2 小时待堵头表干后才能进行堵尾工程作业)

6

Apply filling glue around the tail of the light strip and push the plug into the tail of the light strip (it needs to be left flat for 2 hours to wait for the glue to solidify)

将灯带的尾部四周涂上填充胶并将堵头推入灯带的尾部 (需静置平放 2 小时等待胶凝固)

Installation instructions

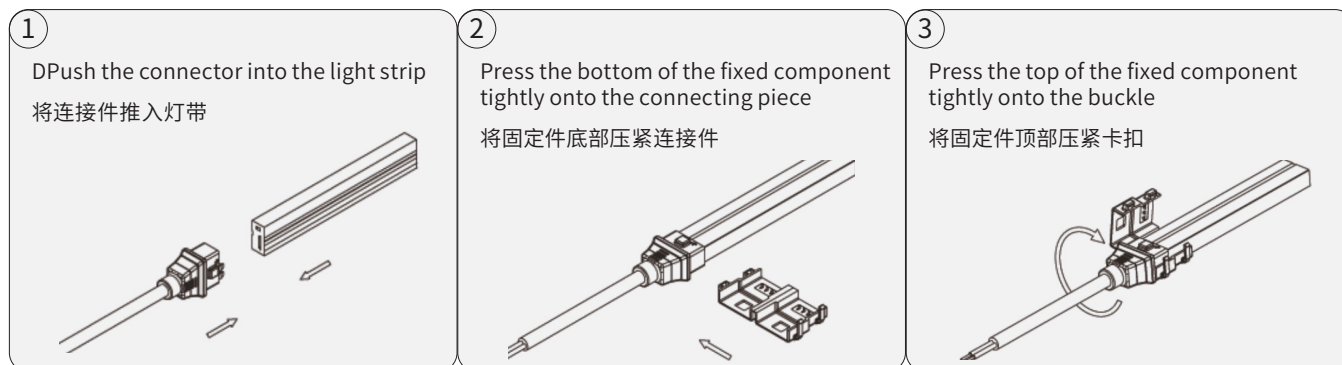
安装说明书



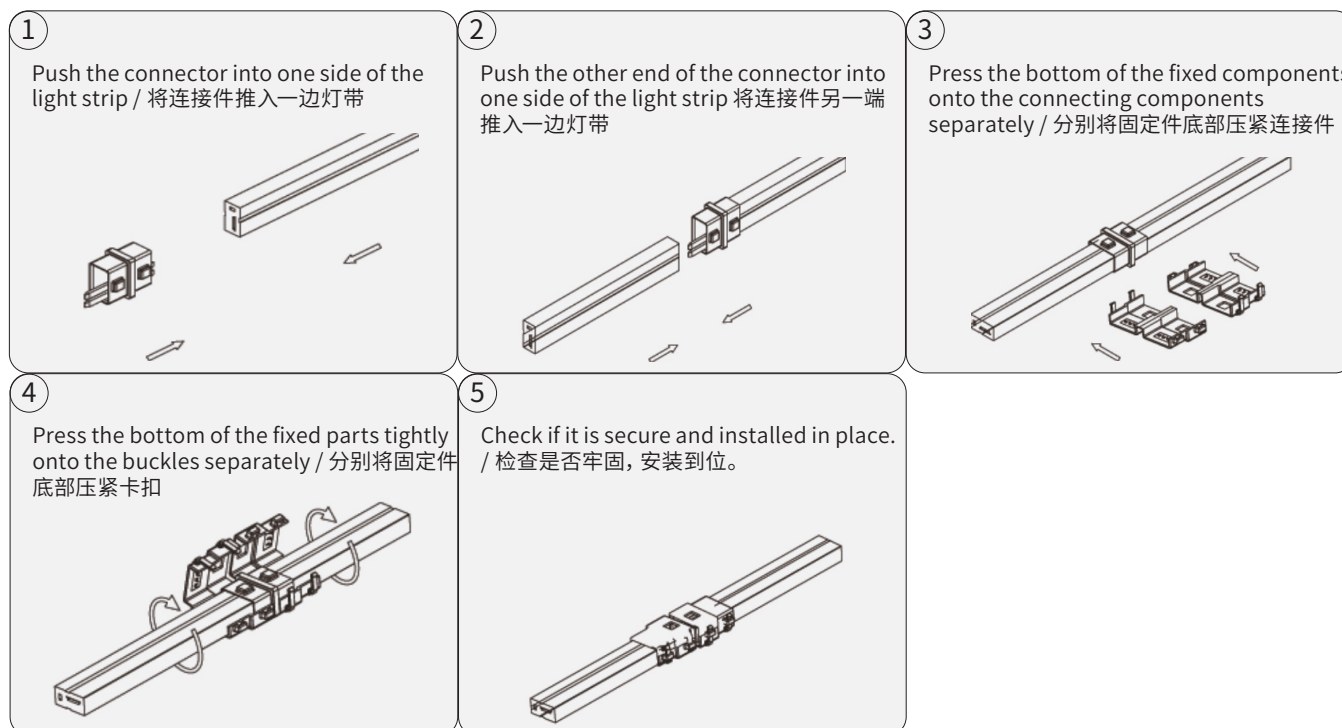
Neon light strip / 霓虹灯带

Suitable for use with similar products / 适于用同类产品

Installation of wired connectors / 带线连接器安装



Installation of intermediate connectors / 中接连接器安装



This connector itself is not waterproof; If waterproof (IP65) is required, the connecting parts need to be glued before connection.

此连接器本身不防水; 如需防水 (IP65), 需在连接前对连接件进行灌胶处理。